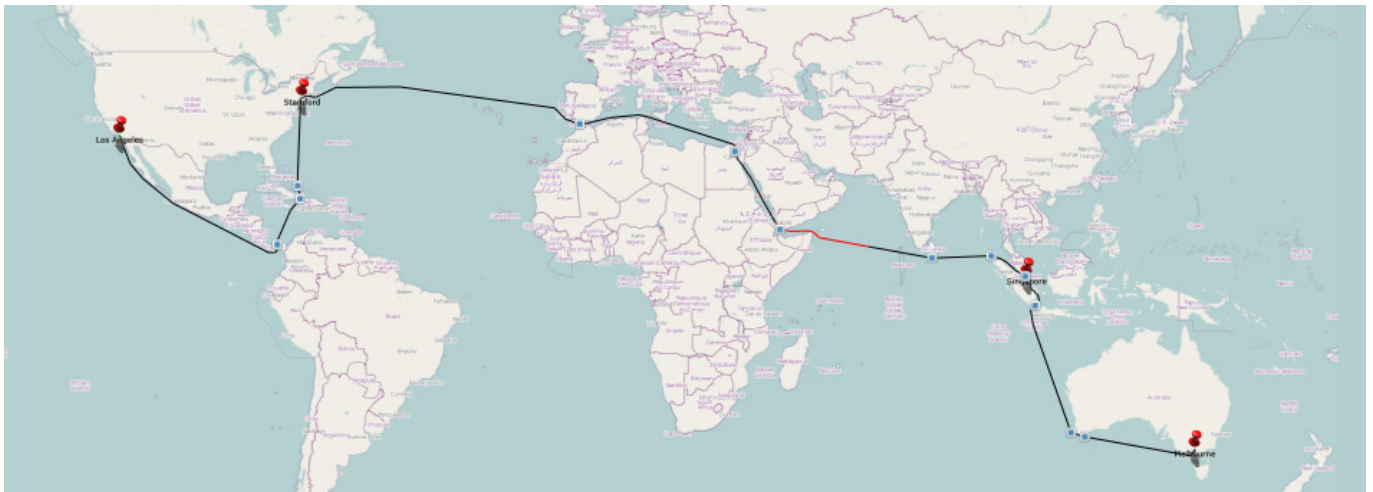


## PRODUCT SHEET GLOMARIS ADVANCED DISTANCE SERVER

Glomar Advanced Distance Server contains a high quality nautical map and calculates voyage distances and durations. It also offers additional information relevant to optimize the voyage, to keep voyages updated at all times with minimal manual entries and to provide real time risk management warnings related to hazardous areas.

Based on many years of experience with shipping and in collaboration with professional navigators, EFocus has developed a sophisticated distance server perfectly suited for commercial shipping. Glomar Advanced Distance Server is an online service, with centralized validation and updating, and can be used online in a user friendly web application, on your iPhone/iPad as a simplified easy accessible App, or seamlessly integrated into the Glomar solutions.



THE GLOMARIS ADVANCED DISTANCE SERVER IS AVAILABLE IN 3 VERSIONS:

- Web Browser (Silverlight)
- Web service - Application Program Interface (API) – for integration with in-house systems
- Free iPhone/iPad app

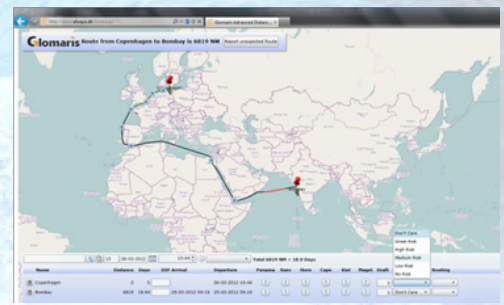
FEATURES:

- Global coverage with 5,000+ ports
- Seca/Eca zones
- Suitable for Bulk, Tank and Project trades world wide
- Based on navigational data
- Offers full choice of alternative routing points (150+)
- Visual port position and shortest/optional route(s) on map
- Global risk management warning in hazardous areas
- Seasons based routing
- Centralized validation of new ports/terminals/routes
- Draft restricted straights/routes

### GLOMARIS ADVANCED DISTANCE SERVER AS WEB BROWSER APPLICATION

The browser based version of Glomar Advanced Distance Server, is a strong, user-friendly and visual way to create voyages, select vital voyage preferences and get voyage distance and durations calculated.

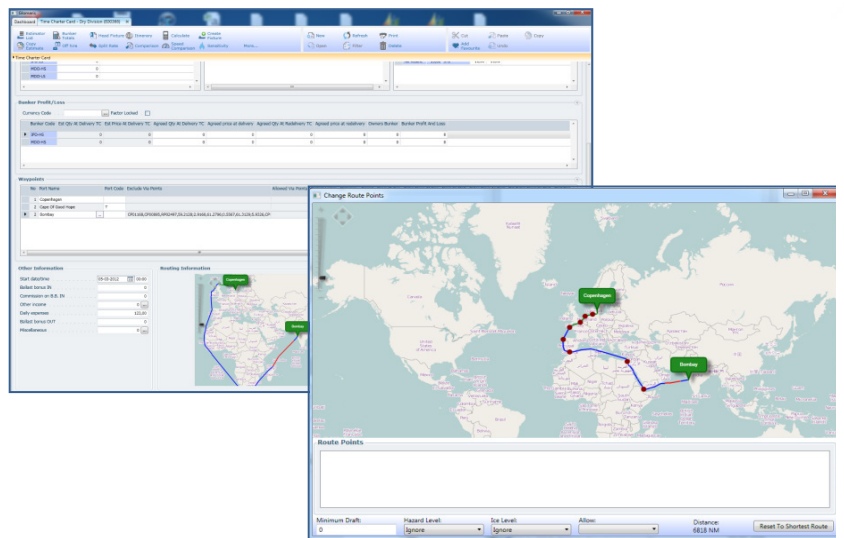
To the right is an example of a voyage created in the browser based version of Glomar Advanced Distance Server. The example shows a voyage between two destinations, the different preferences that can be selected for the voyage and the calculated result together with a graphical view of the route.



### GLOMARIS ADVANCED DISTANCE SERVER AS APPLICATION PROGRAM INTERFACE FOR GLOMARIS

With the Glomar Advanced Distance Server completely imbedded in Glomar OnDemand, it is providing the operators vital real-time information regarding the voyage. Furthermore changes, updates and re-calculations are done directly in Glomar OnDemand and without any manual entries.

To the right is shown an example of the API interface between Glomar Advanced Distance Server and Glomar OnDemand. This example shows the time charter card in Glomar with a change of route on an existing voyage.

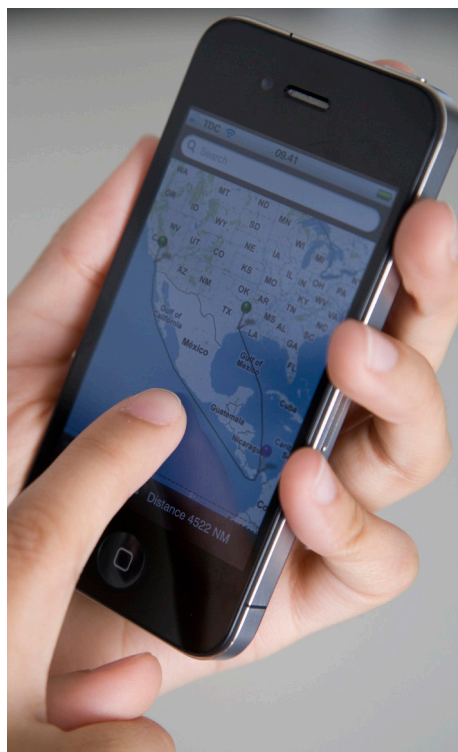


This action automatically re-calculates the calculation based on the updated information from the online Advanced Distance Server. The example also shows the graphic view of the route within Glomar OnDemand incl. which zones the route is passing i.e. Seca/Eca zones, hazardous areas, etc.

### GLOMARIS ADVANCED DISTANCE SERVER AS iPhone/iPad APP

Glomar Distance Server as an App for iPhone/iPad, can provide the user quick answers regarding ports, distances, zone information, etc. when out of office or not near a computer.

This free App is meant to serve as an easy accessible tool like the calculator on the phone or iPad. With this App the user can search ports and see details about this port. When two ports are selected the App will create a route between them, calculate distance and on the map show the different zones on the route, like war- or piracy zones, Seca/Eca zone, etc.



### CONTACT US

E Foqus A/S | Glomar is a software company focused on providing the shipping industry with shipping-specific business solutions, consulting, development, customization, maintenance and support.

Offices in Copenhagen (HQ), Kuala Lumpur, Athens and Vancouver.

E Foqus Danmark A/S | Glomar  
Phone : +45 70 209 201  
Mail : glomar@efoqus.dk  
www.glomar.com